

Instructions for Authors

Journal of Life Science and Biomedicine (ISSN: 2251-9939) publishes papers of high quality in any area of life and living organisms such as microorganisms, plants, animals, and human beings – as well as related considerations like bioethics and biomedicine. [View full aims and scope...](#)

Date of issues: All accepted articles are published bimonthly (around 25th of January, March, May, July, September and November, each year) in full text on the Internet.

Research Paper: Please provide full author information, a set of keywords and an abstract in the title page. Supplementary materials can be published if necessary. Authors are encouraged to be concise although currently there is no length limit on research paper. Short Research Communication presents a concise study, or sometimes preliminary but innovative research findings that might be less substantial than a full research paper.

Short Research Communication is limited to 2500 words. It should have a set of keywords and an abstract summarizing background of the work, the results and their implications. Results and Discussion Section should be combined and followed by Conclusion. Materials and Methods will remain as a separate section. The number of references is limited to 30 and the number of figures and/or tables combined is limited to

Letter: Description of novel findings that might not be suitable for a regular research paper or short research communication may be published as letter. Letter is limited to be under 500 words and 5 references. There should be not more than two figures or tables combined, and no supplementary material.

Review or mini-review should be authoritative and of high interest. A minimum of two figures/illustrations should be included in the review or mini-review that should be some 3000 or 5000 words long (excluding references and figure legends). High quality reviews from leading researchers in their fields are particularly welcome.

Submission

Authors wishing to submit their work, should contact editorial office of the journal via Emails: jaaseditors@gmail.com or jaas@science-line.com. The manuscript and other correspondence can also be [submit online](#). Please embed all figures and tables in the manuscript to become one single file for submission. Once submission is complete, the system will generate a manuscript ID and password sent to author's contact emails. All manuscripts must be checked by English native speaker and submitted in English for evaluation in totally confidential and impartial way.

Supplementary information: The online submission form allows supplementary information to be submitted together with the main manuscript file and covering letter. If you have more than one supplementary files, you can submit the extra ones by email after the initial [submission](#). Author guidelines are specific for each journal. Our Word template can assist you by modifying your page layout, text formatting, headings, title page, image placement, and citations/references such that they agree with the guidelines of journal. If you believe your article is fully edited per journal style, please use our [Word template \(.doc\)](#) available [here](#) before submission.

Supplementary materials may include figures, tables, methods, videos, and other materials. They are available online linked to the original published article. Supplementary tables and figures should be labeled with a "S", e.g. "Table S1" and "Figure S1". The maximum file size for supplementary materials is 10MB each. Please keep the files as small possible to avoid the frustrations experienced by readers with downloading large files.

Submission to the Journal is on the understanding that:

- 1.The article has not been previously published in any other form and is not under consideration for publication elsewhere;
- 2.All authors have approved the submission and have obtained permission for publish work.
- 3.Researchers have proper regard for conservation and animal welfare considerations. Attention is drawn to the '[Guidelines for the Treatment of Animals in Research and Teaching](#)'. Any possible adverse consequences of the work for populations or individual organisms must be weighed against the possible gains in knowledge and its practical applications. If the approval of an ethics committee is required, please provide the name of the committee and the approval number obtained.

Ethics Committee Approval: Experimental research involving human or animals should have been approved by author's institutional review board or ethics committee. This information can be mentioned in the manuscript including the name of the board/committee that gave the approval. Investigations involving humans will have been performed in accordance with the principles of [Declaration of Helsinki](#). And the use of animals in experiments will have observed the *Interdisciplinary Principles and Guidelines for the Use of Animals in Research, Testing, and Education* by the New York Academy of Sciences, Ad Hoc Animal Research Committee. If the manuscript contains photos or parts of photos of patients, informed consent from each patient should be obtained. Patient's identities and privacy should be carefully protected in the manuscript.

Review/Decisions

Manuscripts that are judged to be of insufficient quality or unlikely to be competitive enough for publication will be returned to the authors at the initial stage. The remaining manuscripts go through a double-blind review process by two reviewers and possible decisions are: accept as is, minor revision, major revision, or reject. Authors should submit back their revisions within 14 days in the case of minor revision, or 30 days in the case of major revision.

Plagiarism: There is a zero-tolerance policy towards plagiarism (including self-plagiarism) in our journals. Manuscripts are screened for plagiarism by [Docol@c](#) a plagiarism finding tool, before or during publication, and if found they will be rejected at any stage of processing. See sample of [Docol@c-Report](#).

Format for Publication

Please include Tables and figures at the end of manuscript Word file, or provide a high quality PDF containing all figures. Make sure images are of highest resolution, and any letters inside are clear and legible. If the figures or tables are created using PowerPoint, Photoshop, Microsoft Excel etc, please also provide the original files from those programs.

Main Format: First page of the manuscripts must be properly identified by the title and the name(s) of the author(s). Font type is Times New Roman and font sizes: 14pt for the title, 10pt for the main text, double spaced, in A4 format with 2cm margins. All pages and lines of the main text should be numbered consecutively throughout the manuscript. Unknown abbreviations in the article title are not allowed. Manuscripts should be arranged in the following order:

Title page:

- **TITLE** (brief, attractive and targeted, UPPERCASE);
- **Name(s) and Affiliation(s) of author(s)** including post code and corresponding author's E-mail). Please provide full names. Important! Please write first name and middle name before surname or lastname, e.g., "Mike Johnson" (not "Johnson, Mike"; not "Johnson M."; not "M. Johnson").
- **ABSTRACT** (should not contain citations to references);
- **Key words** (3-6 keywords, separate by semicolons; or comma);
- **Abbreviations** (those used throughout the manuscript);

Main Text: Please do not add number before subtitles.

- **INTRODUCTION** (should provide clear statement of the problem, the relevant literature on the subject, and the proposed approach or solution)
- **MATERIALS AND METHODS** (should be complete enough to allow experiments to be reproduced)
- **RESULTS** (should be presented with clarity and precision)
- **DISCUSSION**; (should interpret the findings in view of the results obtained in this and in past studies on this topic); Results and Discussion can be presented jointly if preferred.
- **CONCLUSION**; (elaborate on the importance of the work or suggest the potential applications and extensions); Discussion and Conclusion can be presented jointly if preferred.
- **Appendix** (if needed)
- **Acknowledgements** (if there are any);
- **REFERENCES**;
- **Tables**;
- **Figures**

Citation of Tables and Figures in the text: Tables and Figures should be numbered consecutively. Citation of tables and figures should use the format: Table 1, Table 2, ... Figure 1, Figure 2, ... (or Fig. 1, Fig. 2, ...). Parts in a figure can be identified by A, B, C, D, ... and cited as Fig. 2A, Fig. 2B, Fig. 2C. However, the abbreviation of "Table" to "Tab." for example "Tab. 1" should be avoided.

References:

References should be numbered consecutively and cited in the manuscript text by number (not by author and date). Number citations consecutively in square brackets [1, 2]. References should not be formatted as footnotes. Avoid putting personal communications and unpublished observations as references. A reference style for **EndNote** may be found [here](#).

In the text: ---[1],--- [2, 3],-----[3-7].

If sentences starts or cite name of references in the text: Smit [1].....; Smit and Janak [2].....; Moreki et al. [3]..... .

Please note that the references at the end of this document are in the preferred referencing style. Give all authors' names; do not use "et al." unless there are six authors or more. Use a space after authors' initials. Papers that have not been published should be cited as "unpublished". Papers that have been accepted for publication, but not yet specified for an issue should be cited as "to be published". Papers that have been submitted for publication should be cited as "submitted for publication". Capitalize only the first word in a paper title, except for proper nouns and element symbols. For papers published in translation journals, please give the English citation first, followed by the original foreign-language citation.

Journal Paper (two formats are acceptable):

1. Hasan V, Sri Widodo M and Semedi B. 2015. Oocyte Diameter Distribution and Fecundity of Javaen Barb (*Systemus Orphoides*) at the Start of Rainy Season in Lenteng River, East Java, Indonesia insurance. *J. Life Sci. Biomed.* 5(2): 39-42. pii: S225199391500009-5
2. Sukiman, F, Imy SC & Hilman A. 2014. Short Communication: Growth of Seaweed *Eucheuma cottonii* in Multitrophic Sea Farming Systems at Gerupuk Bay, Central Lombok, Indonesia. *Bioscience.* 6(1): 82-85.
3. Jackson D, Firtko A. 2007. Personal resilience as a strategy for surviving and thriving in the face of workplace adversity: a literature review. *Journal of Advanced Nursing.* 60(1): 1-9.

Conference: Skinner, J., Fleener, B. & Rinchiuso, M. 2003. Examining the Relationship between Supervisors and Subordinate Feeling of Empowerment with LMX as A Possible Moderator. 24th Annual Conference for Industrial Organizational Behavior.

Book: Russell, Findlay E, 1983. Snake Venom Poisoning, 163, Great Neck, NY: Scholium International. ISBN 0-87936-015-1.

Web Site: Bhatti SA and Firkins JT, 2008. http://www.ohioline.osu.edu/sc1156_27.html.

All the cited papers in the text must be listed in References. All the papers in References must be cited in the text. Where available, URLs for the references have been provided.

Competing Interests

Competing interests that might interfere with the objective presentation of the research findings contained in the manuscript should be declared in a paragraph heading "Competing interests" (after Acknowledgment section and before References). Examples of competing interests are ownership of stock in a company, commercial grants, board membership, etc. If there is no competing interest, please use the statement "The authors declare that they have no competing interests".

JLSB complies with [International Committee of Medical Journal Editors' Recommendations \(ICMJE\)](#). So, all authors will be required to complete and submit JLSB Conflicts of Interest (see [ICMJE Conflict of Interest form](#)). Please download the form, fill it out, save it to your computer, and then submit or send the form directly to us.



Abbreviations

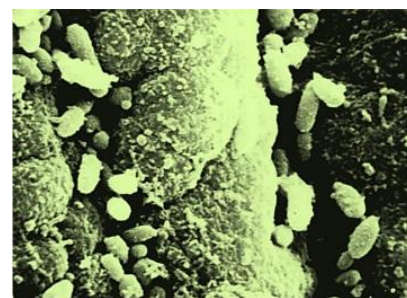
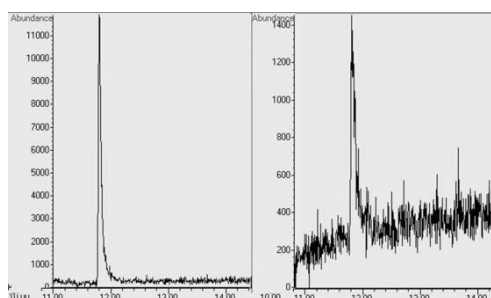
Abbreviations should be presented in one paragraph, in the format: "term: definition". Please separate the items by ";". E.g. ANN: artificial neural network; CFS: closed form solution;

Formulae, numbers and symbols

1. Typewritten formulae are preferred. Subscripts and superscripts are important. Check disparities between zero (0) and the letter O, and between one (1) and the letter I.
2. Describe all symbols immediately after the equation in which they are first used.
3. For simple fractions, use the solidus (/), e.g. 10 /38.
4. Equations should be presented into parentheses on the right-hand side, in tandem.
5. Levels of statistical significance which can be used without further explanations are *P < 0.05, **P < 0.01, and ***P < 0.001.
6. In the English articles, a decimal point should be used instead of a decimal comma.
7. Use Symbol fonts for "±"; "≤" and "≥" (avoid underline).
8. In chemical formulae, valence of ions should be given, e.g. Ca²⁺ and CO₃²⁻, not as Ca++ or CO₃.
9. Numbers up to 10 should be written in the text by words. Numbers above 1000 are recommended to be given as 10 powered x.
10. Greek letters should be explained in the margins with their names as follows: Αα - alpha, Ββ - beta, Γγ - gamma, Δδ - delta, Εε - epsilon, Ζζ - zeta, Ηη - eta, Θθ - theta, Ιι - iota, Κκ - kappa, Λλ - lambda, Μμ - mu, Νν - nu, Ξξ - xi, Οο - omicron, Ππ - pi, Ρρ - rho, Σσ - sigma, Ττ - tau, Υυ - ipsilon, Φφ - phi, Χχ - chi, Ψψ - psi, Ωω - omega. Please avoid using math equations in Word whenever possible, as they have to be replaced by images in xml full text.

GRAPHICAL ABSTRACT

Authors should provide a graphical abstract (a beautifully designed feature figure) to represent the paper aiming to catch the attention and interest of readers. Graphical abstract will be published online in the table of content. The graphical abstract should be colored, and kept within an area of 12 cm (width) x 6 cm (height) or with similar format. Image should have a minimum resolution of 300 dpi and line art 1200dpi.



Note: Height of the image should be no more than the width. **Please avoid putting too much information into the graphical abstract as it occupies only a small space.** Authors can provide the graphical abstract in the format of PDF, Word, PowerPoint, jpg, or png, after a manuscript is accepted for publication.

AUTHOR BIOGRAPHY New!

Authors now have the option to publish a biography together with the paper, with information such as MD/PhD degree, past and present positions, research interests, awards, etc. This increases the profile of the authors and is well received by international readers. Author biography can be added to the end of paper, in a section heading "Author biography".



This work is licensed under a [Creative Commons Attribution-NonCommercial 4.0 International License](#)

Journal of Life Science and Biomedicine



Publication Data

ISSN: 2251-9939

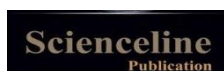
Frequency: Bi-Monthly

Current Volume: 6 (2016)

Publisher: [Scienceline Publication](#)

Aims and Scope

Journal of Life Science and Biomedicine (ISSN: 2251-9939) is an international peer-reviewed open access journal, publishes the full text of original scientific researches, reviews, case reports and short communications, bimonthly on the internet... [View full aims and scope](#)
JLSB is indexed/covered by NLM catalog-PubMed, RICEST (ISC), Ulrich's™, OCLC, TOCs, TIB, Genamics, Google Scholar, IndexCopernicus... [full index information](#)



[ABOUT US](#) | [CONTACT US](#) | [PRIVACY POLICY](#)

Scienceline Offices:

Atatürk Univ., Erzurum 25100, Turkey, www.science-line.com

Maragheh Univ., East Azerbaijan, Iran, www.scienceline.ir

Tel: +90-538 770 8824; +98-914 420 7713

Email: administrator@science-line.com